



# SCM

## RAILWAY LIFTING COLUMNS

HANDLING  SPECIALTY

We build big things to help our customers build big things.

— SINCE 1963 —



OPERATING IN THE MARKET FOR MORE THAN 60 YEARS, HANDLING IS A WORLD LEADER IN LIFTING EQUIPMENT FOR THE RAILWAY SECTOR

### International Partners

HANDLING supplies the largest train-builders in the world and railway maintenance companies. Thanks to technical sales team, today HANDLING exports its equipment all over the world.

### Tailor-made Products

HANDLING's products are developed to be customized according to the customer's specific requirements. HANDLING has organized its operations to plan and optimize projects, search for and implement new solutions and customize its systems to customers' specific needs.

### Safety and Performance

Compliant to the MACHINE DIRECTIVE 2006/42/CE and the EUROPEAN DIRECTIVE EN 1493. Compliance with increasingly strict safety regulations and its continuous commitment to simplify the maintenance operations of vehicles lead HANDLING to use the best quality materials and cutting-edge technologies in order to guarantee the highest possible quality standards.

## SCM

### RAILWAY LIFTING COLUMNS

Our electromechanical lifting system is composed of:

- Motoreducer
- Irreversible trapezoidal screw
- Main nut
- Safety nut

Lifting capacity of each column from 5,5 metric Tons up to 50 Tons. All columns can be manufactured both with fixed or movable anvil. Three different types of electronic systems for maximum flexibility and that can control a set with a minimum of 4 to a maximum of 64 columns.



---

*“ The Handling Specialty team was good to work with and very responsive to all concerns.*

*I enjoyed working with your team. Always satisfied. ”*

TERRY GREATHEAD - ABB INC.

---

---

*“ Handling Specialty is an important machine builder partner for Siemens Canada Ltd. We are proud to be a technology partner of Handling Specialty.”*

JORIS MYNY - SIEMENS CANADA LTD.

---

## ELECTRONIC SYSTEM

### [1] STANDARD

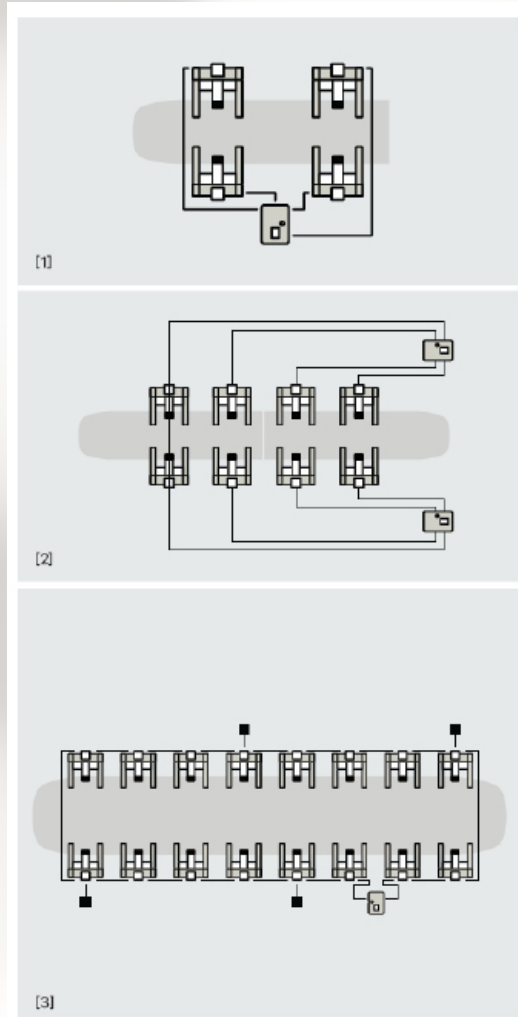
It is able to control up to 8 columns. The most practical and economical configuration.

### [2] EXPANDABLE

It is able to control up to 16 columns (8+8). Equipped with two control units, it comes with practicality of the Standard System while having the possibility to create two distinct lifting sets.

### [3] SERIAL

Capable of controlling up to 64 columns. The most complete and advanced, designed for maximum flexibility is able to expand the lifting set with no modification required. It's loop connection system decreases the total length of the cables necessary and limits the crossing of the cables over the rail to only two.



**SECONDARY  
CONTROL UNIT**



**PRIMARY  
CONTROL UNIT**



## A FEW CHARACTERISTICS OF OUR ELECTRONIC SYSTEM

---

- Event storing and recording (work time, indication of the events occurred and failures, etc.).
- Remote assistance: using an internet connection it is possible run to a complete check of system: electronic and electromechanical tests and checks, verifying failures, analyzing work procedures.
- Self-programmed maintenance.



## OPTIONS

- Translator:
  - mechanical or hydraulic / Manual or motorized
- Smart interface / Touch Screen
- Motorized displacement system:
  - three phase or battery operated
- Auxiliary rail displacement system:
  - manual or motorized
- Frequency inverter system
- 4.0 Industry
- Wired pendant remote control or wireless safety remote control
- Automatic lubrication system
- Loading cell system for weighing

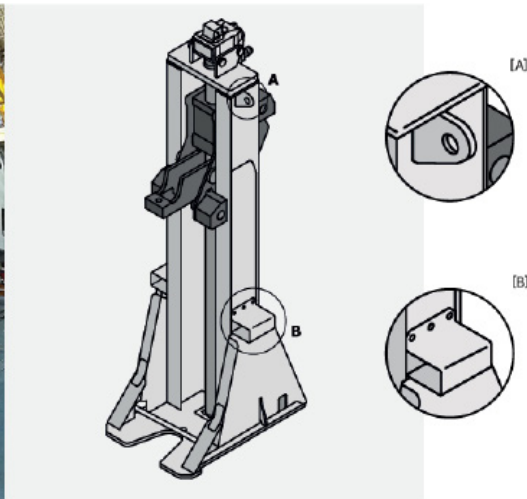


Automatic lubrication system



Loading cell system for weighing

### COLUMN WITH MOVEABLE ANVIL

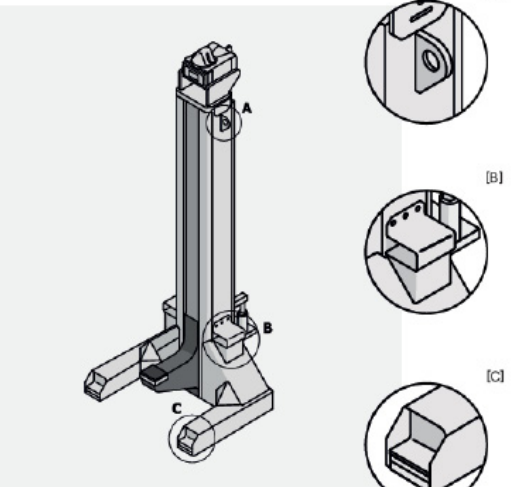


[A] Hooks for lifting and moving [B] for transport with forklift [C] Stabilizer by a crane



Manual and mechanical translator

### COLUMN WITH FIXED ANVIL



Motorized displacement system: battery operated



COMPLEMENTARY TOOLS

---



STR HEAD AND TAILSTOCK POSITIONERS



CSF LIFTING BOGIE PLATFORM



CS TEMPORARY BOGIES



CAV - F AXLE STANDS

---

**“ We have had a long term relationship with Handling Specialty and have been particularly happy with the service and product quality during this time. Would recommend them for any lifting applications based upon our experience. ”**

JOHN SANGER, SENIOR TOOLING  
TECHNOLOGIST, BOMBARDIER  
TRANSPORTATION

---

**“ It’s a pleasure working with this team on board the Allure of the Seas. The team here is doing an excellent job and we are making good progress. ”**

SACHA SAVENKOFF, TECHNICAL  
DIRECTOR OF ENTERTAINMENT — ROYAL  
CARIBBEAN CRUISE LINES

---



## TESTING MACHINES

---

All our systems undergo a number of tests that are necessary to verify the compliance with the structural and the suitability at the overloads in compliance to the EN 1493 Directive.

To do so, we use a special machine designed and manufactured by Handling.

A computerized electronic control manages independently the data originated from a load cell which interfaces itself with a hydraulic control unit, equipped with special proportional valves and a pump with variable capacity.

The maximum capacity reachable by the testing machine is higher than 100 metric tons.

All systems undergo but are not limited to the following tests:

- Dynamic Overload of +15% respect of the nominal capacity.
- Static Overload of +50% respect of the nominal capacity.
- Check of emitted vibrations of the equipment during the dynamic test.
- Absorption of electric current (ampere) during the dynamic test.
- Check of all system safety features.

Marek Cybula  
Sr. Technical Sales Representative  
O: 905-945-9661 X 261  
C: 905-971-5608  
mcybula@handling.com

H A N D L I N G  S P E C I A L T Y

www.handling.com • 1-800-559-8366  
219 South Service Rd W., Grimsby, Ontario, Canada L3M 1Y6



Professional Engineers  
Ontario